



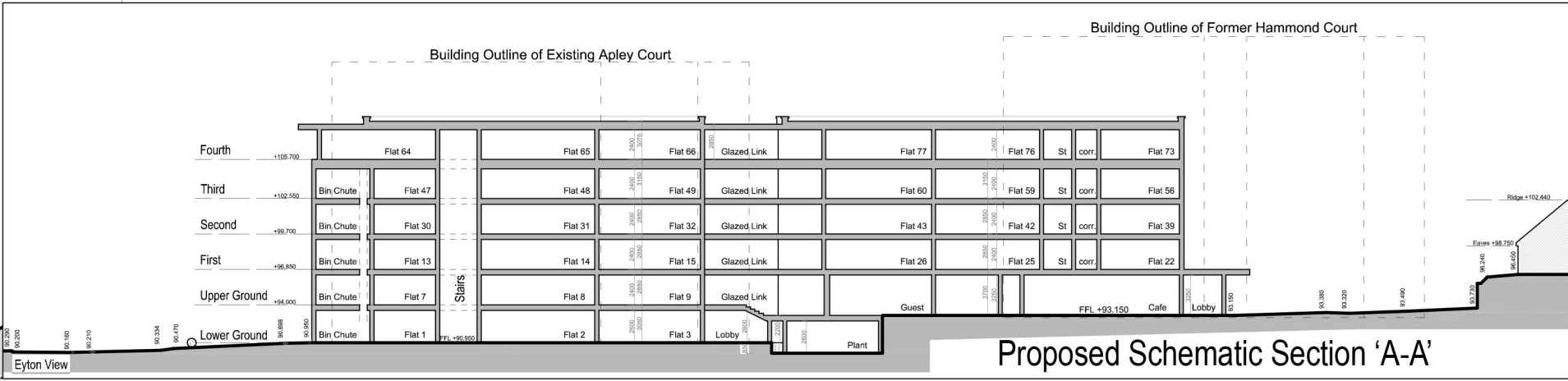
Site Plan (Indicating Ground Floor Plan - Floor 0)



Phase 1 - 3D Model






Proposed Completed Development - 3D Model



Proposed Schematic Section 'A-A'



LEGEND:		
HAUGHMOND COURT (New Phase 1) Apartments: 22 No. 1 Bedroom 2P Apartment 23 No. 2 Bedroom 3P Apartment Total 45 No. Dwellings based on 5 storey development.		
APLEY COURT (New Phase 2) Apartments: 16 No. 1 Bedroom 2P Apartment 20 No. 2 Bedroom 3P Apartment Total 36 No. Dwellings based on 6 storey development.		
DEVELOPMENT TOTAL: 38 No. 1 Bedroom 2P Apartment 43 No. 2 Bedroom 3P Apartment Total Extra Care Parking Spaces - 81 Apartments 52 No. (Including 7No. disabled spaces & 7No. Staff spaces)		
		1 Bedroom Apartment
		2 Bedroom Apartment

Site Boundary 
Site Area - 7480 sq.m (0.748 hectares)
Trees to be removed: T5, T6, T15, T16, T17, T18 & T21

NOTES:
The copyright © of this drawing is vested in the Architect and must not be copied or reproduced without consent.

All Contractors must visit the site and be responsible for taking and checking dimensions relative to their work. Sutton and Wilkinson Chartered Architects to be advised of any variation between drawings and site conditions.

REV:	AMENDMENT:	INT:	DATE:
B	Planning Issue. Site Plan & Floor Plans Updated.	AMB	10.09.20
A	Planning Issue. Site Plan Updated.	AMB	24.04.20

PLANNING

PROJECT:
REDEVELOPMENT OF HAUGHMOND COURT
WELLINGTON
TELFORD

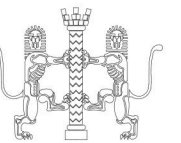
CLIENT:
Wrekin Housing Trust

TITLE:
PROPOSED SITE AND FLOOR PLANS
EXTRA CARE (81 Bed Scheme)

SUTTON AND WILKINSON
CHARTERED ARCHITECTS

Victoria House, 13 New Penkridge Road,
Cannock, Staffs, WS11 1HW

Telephone: 01543 466441
Facsimile: 01543 462469
e-mail: office@suttonwilkinson.co.uk



SCALE	DRAWN	DATE	SIZE
1:500	AMB	FEB 20	A2
DRAWING NUMBER			REVISION
2444 - 27			B